

# Special Eurobarometer 554

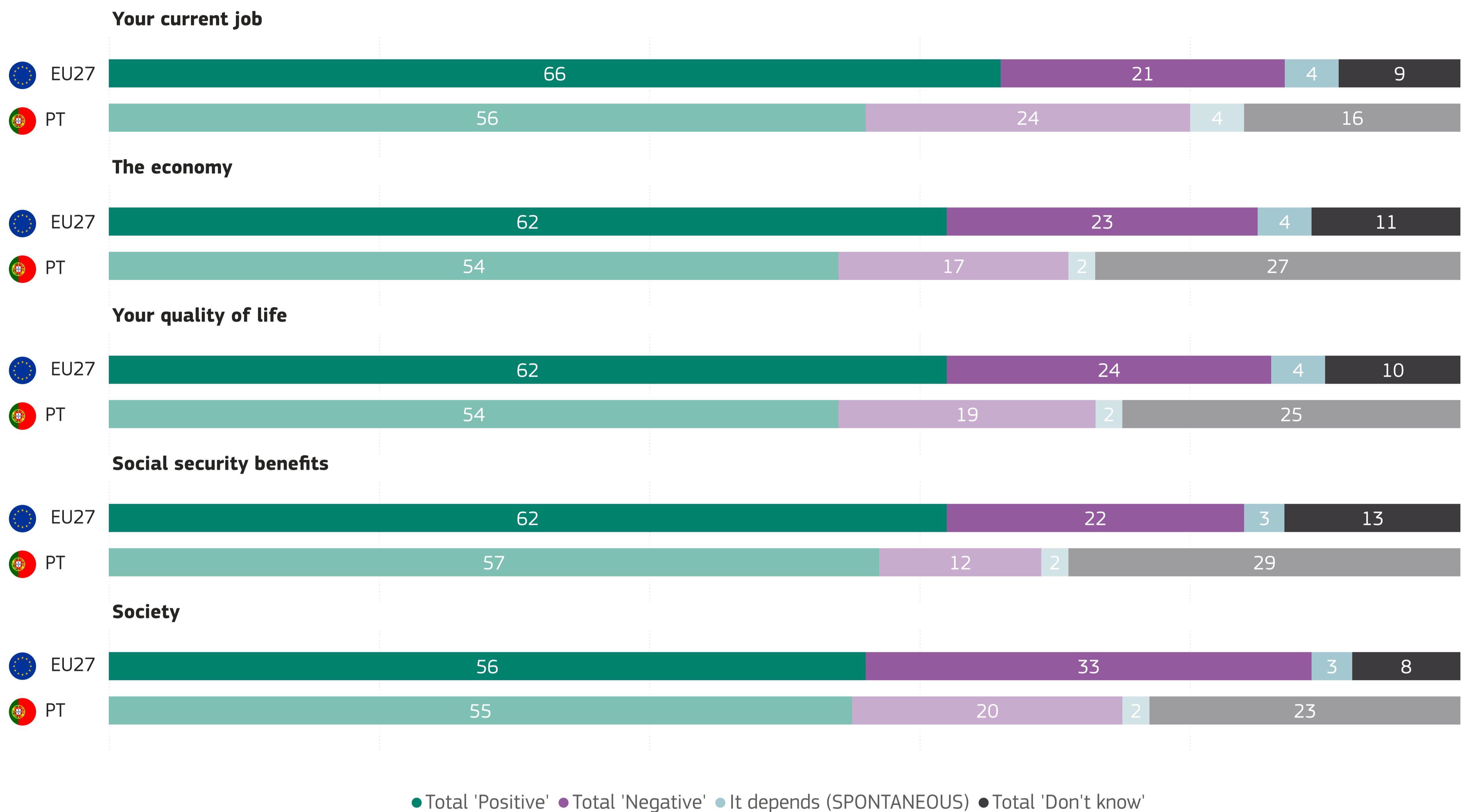
## Artificial Intelligence and the future of work

Fieldwork EU: 25 April - 22 May 2024  
TOTAL EU: 26 415 INTERVIEWS

Fieldwork PORTUGAL: 01 May - 17 May 2024  
TOTAL PORTUGAL: 1 029 INTERVIEWS

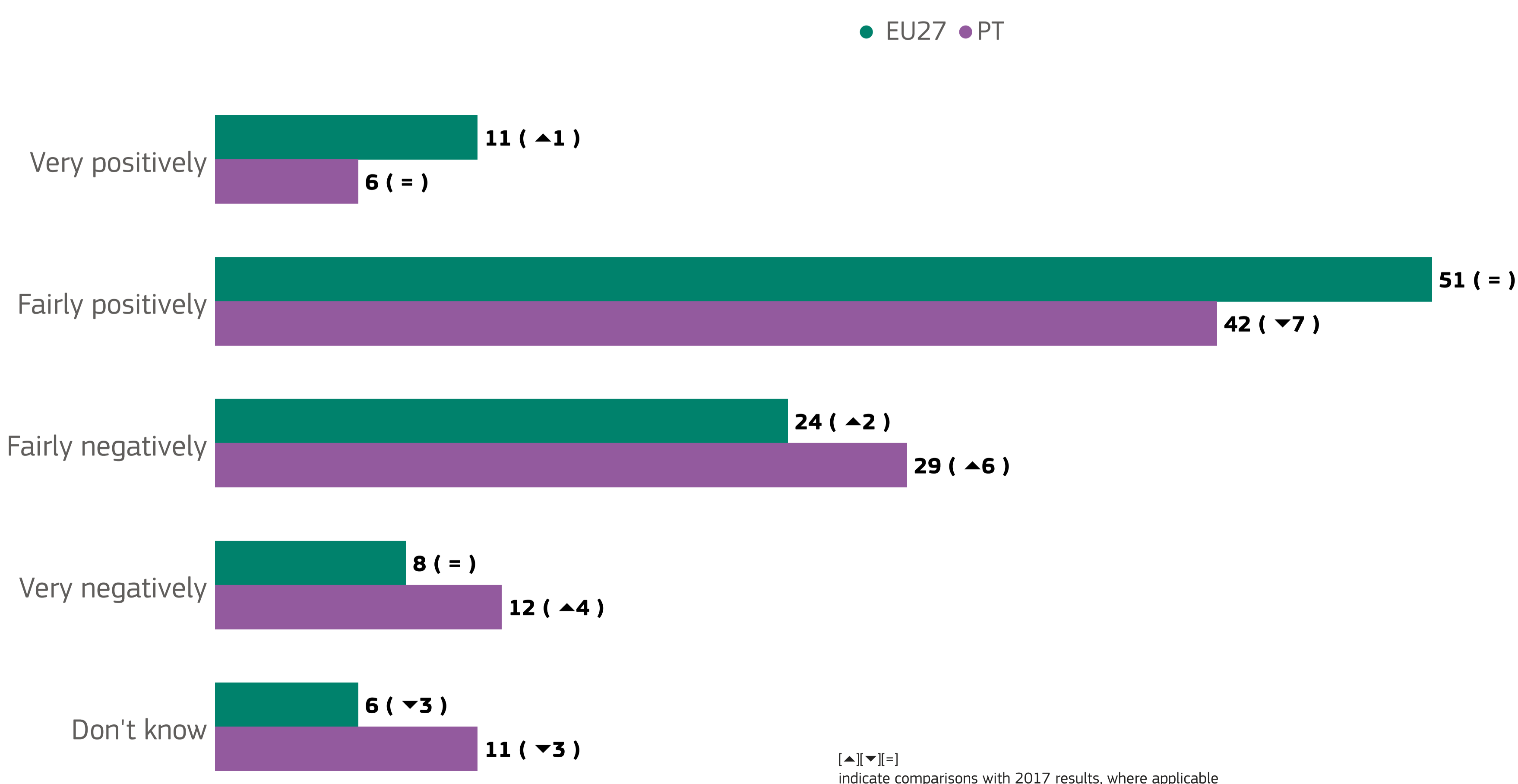
## 1. PERCEPTIONS OF THE IMPACT OF DIGITAL TECHNOLOGIES

**QB1. In your view, what impact do the most recent digital technologies, including Artificial Intelligence, currently have on (%)**



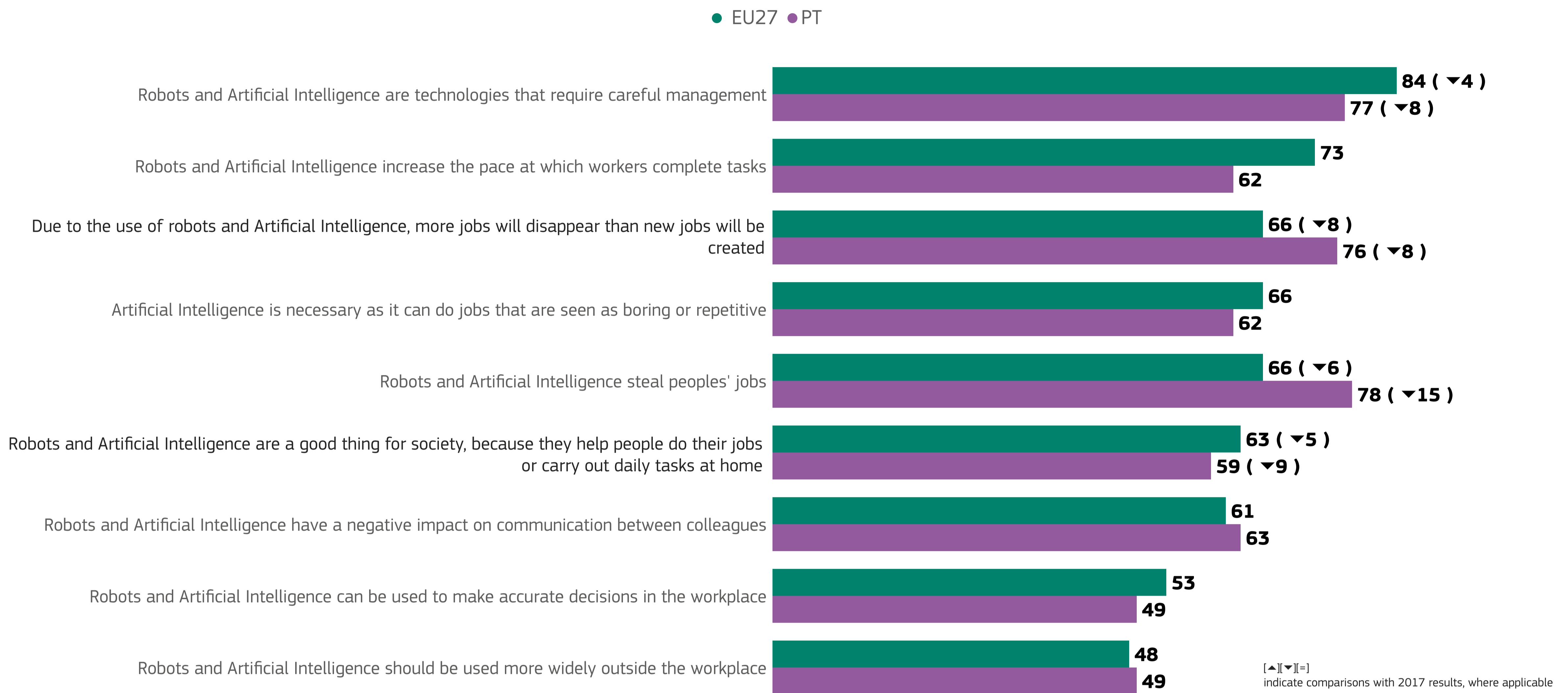
## 2.1 ATTITUDES TOWARDS DIGITAL TECHNOLOGIES IN THE WORKPLACE

**QB5. How positively or negatively do you perceive the use of robots and Artificial Intelligence in the workplace? (%)**

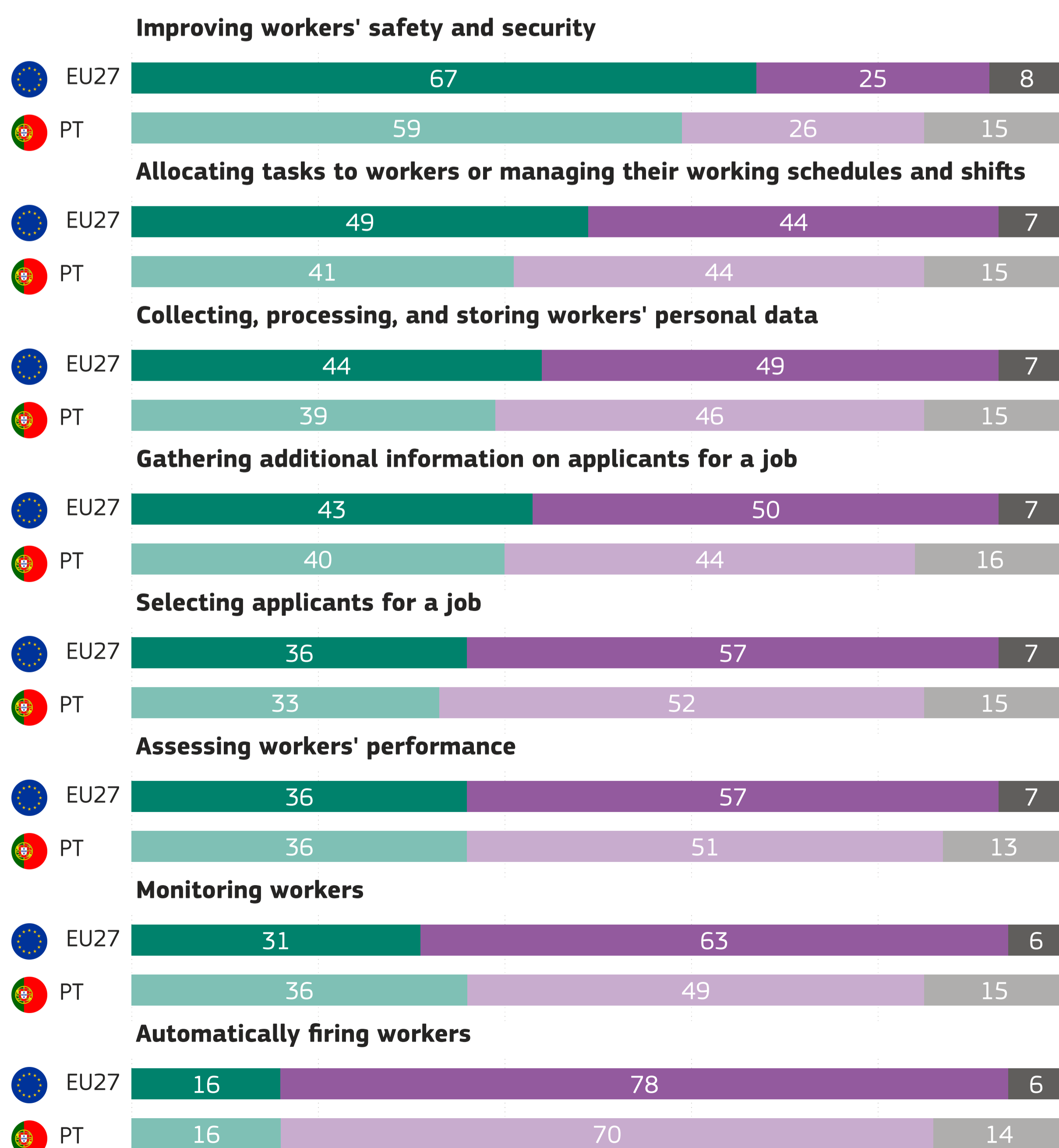


## 2.2 ATTITUDES TOWARDS DIGITAL TECHNOLOGIES IN THE WORKPLACE

QB6. Please tell me to what extent you agree or disagree with each of the following statements. - Total 'Agree'. (%)



QB8. In general, how positively or negatively do you perceive the use of digital technologies, including Artificial Intelligence, in the workplace for each of the following activities (%)

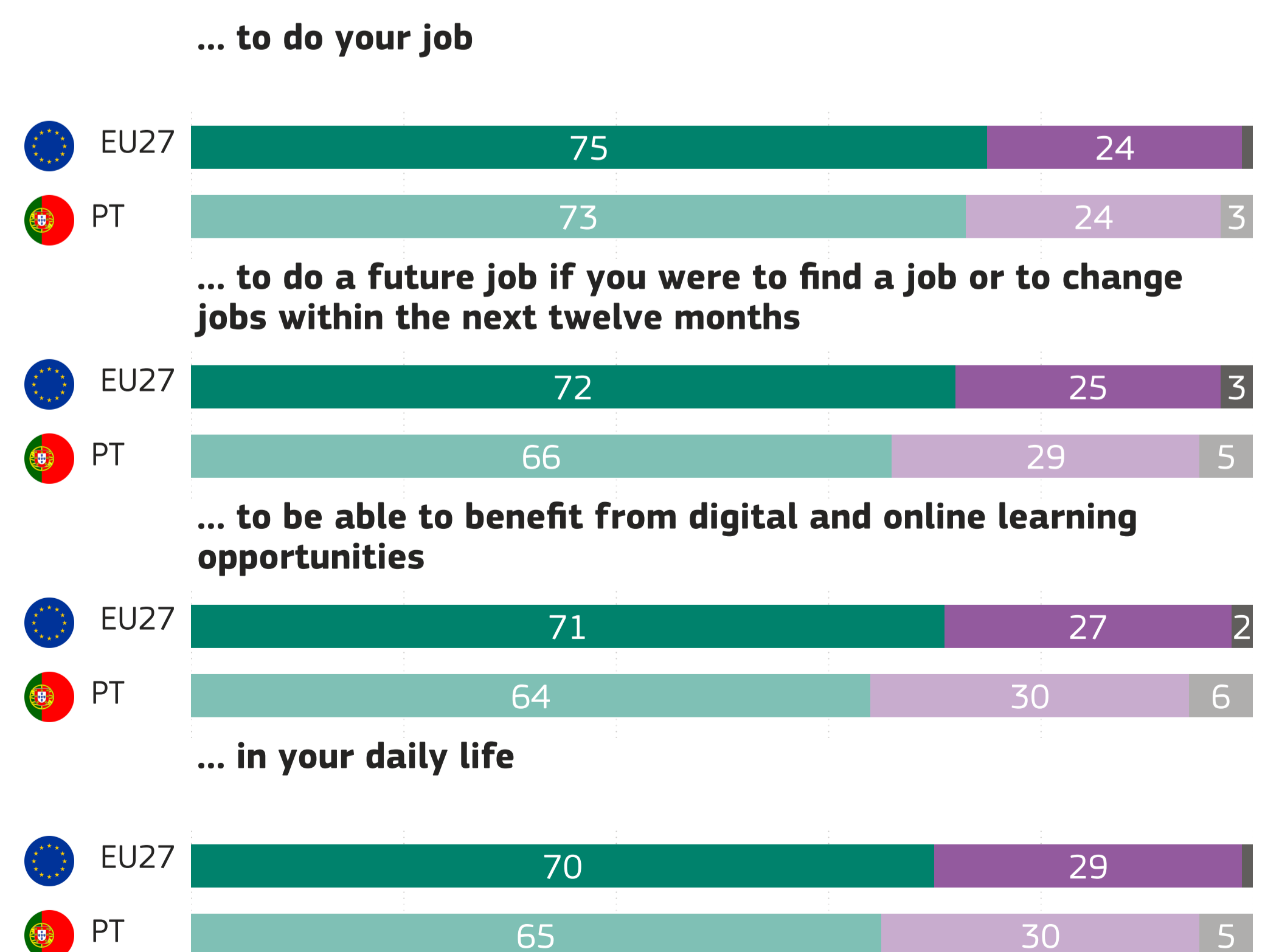


● Total 'Positively' ● Total 'Negatively' ● Don't know

## 3. PROFICIENCY WITH DIGITAL TECHNOLOGIES

QB2. To what extent do you agree or disagree with the following statements regarding your skills in the use of the most recent digital technologies, including Artificial Intelligence? Think about, for example, using smart appliances at home that you can control remotely for heating, cooking, or cleaning; using apps on your smartphone to handle your daily schedule; or using websites to manage your tasks at work. You consider yourself to be sufficiently skilled in the use of digital technologies... (%)

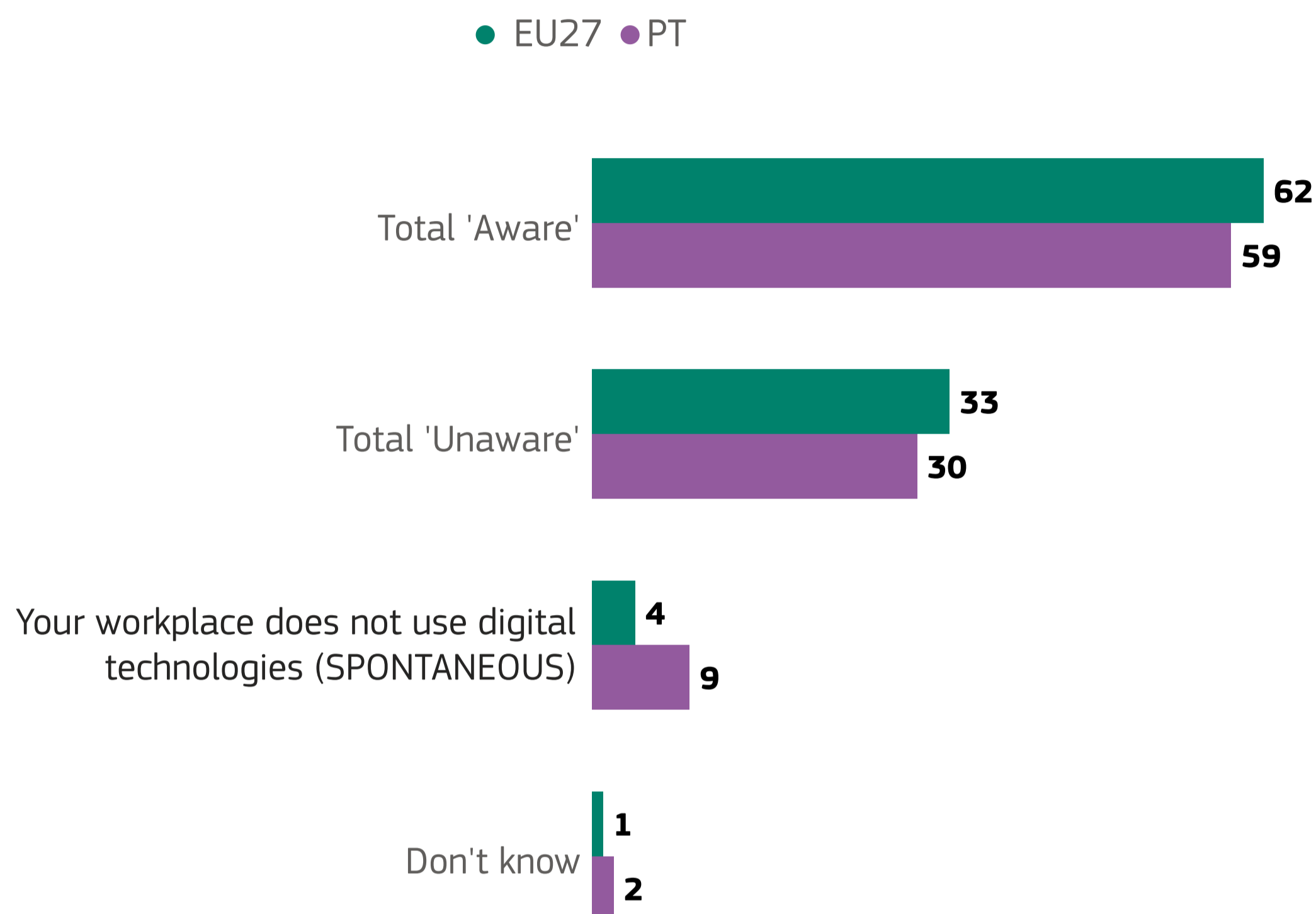
\*Respondents who answered "not applicable" are not included in this result to allow for a comparison with the previous survey



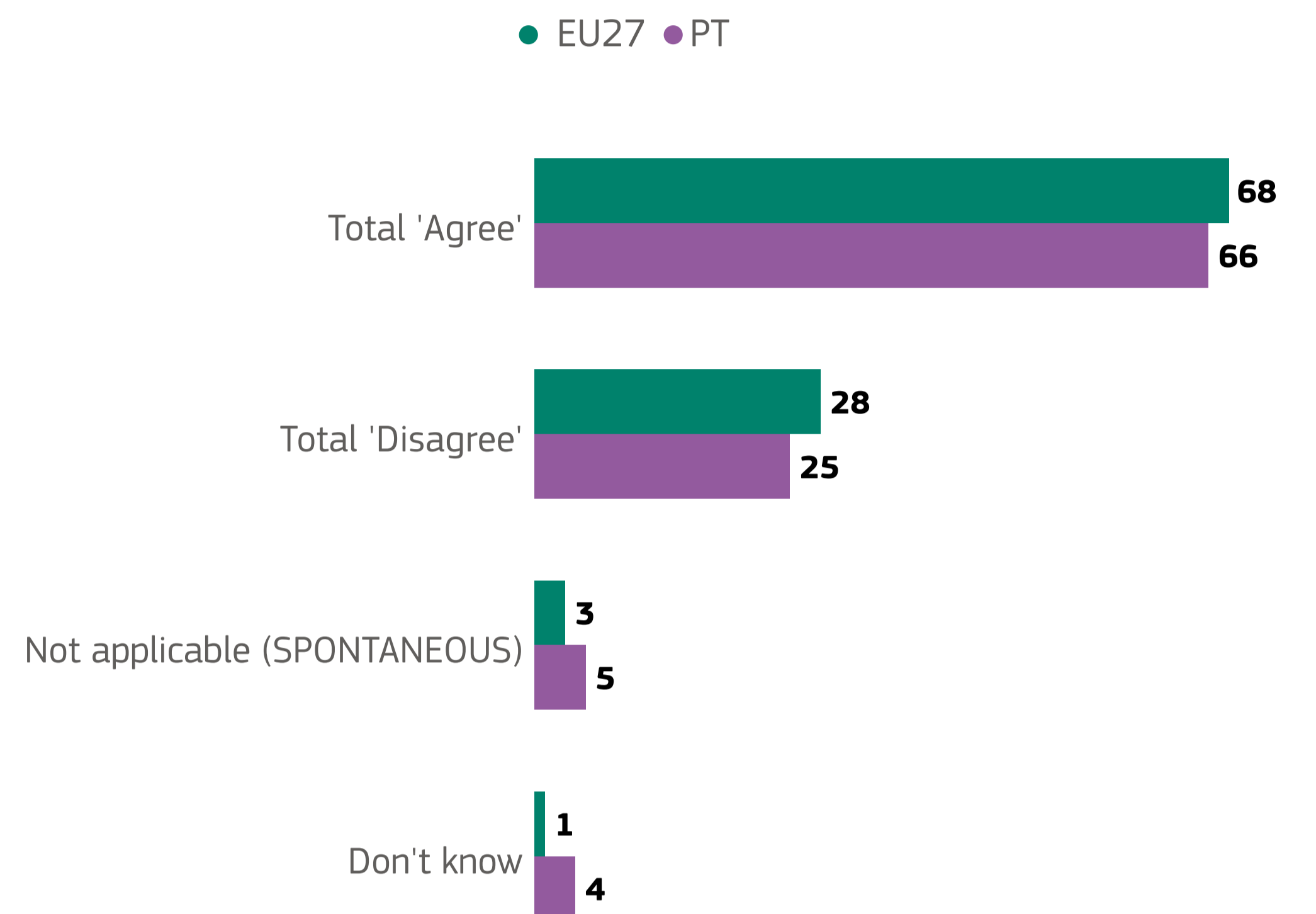
● Total 'Agree' ● Total 'Disagree' ● Don't know

## 4. EXPERIENCE OF DIGITAL TECHNOLOGIES IN THE WORKPLACE

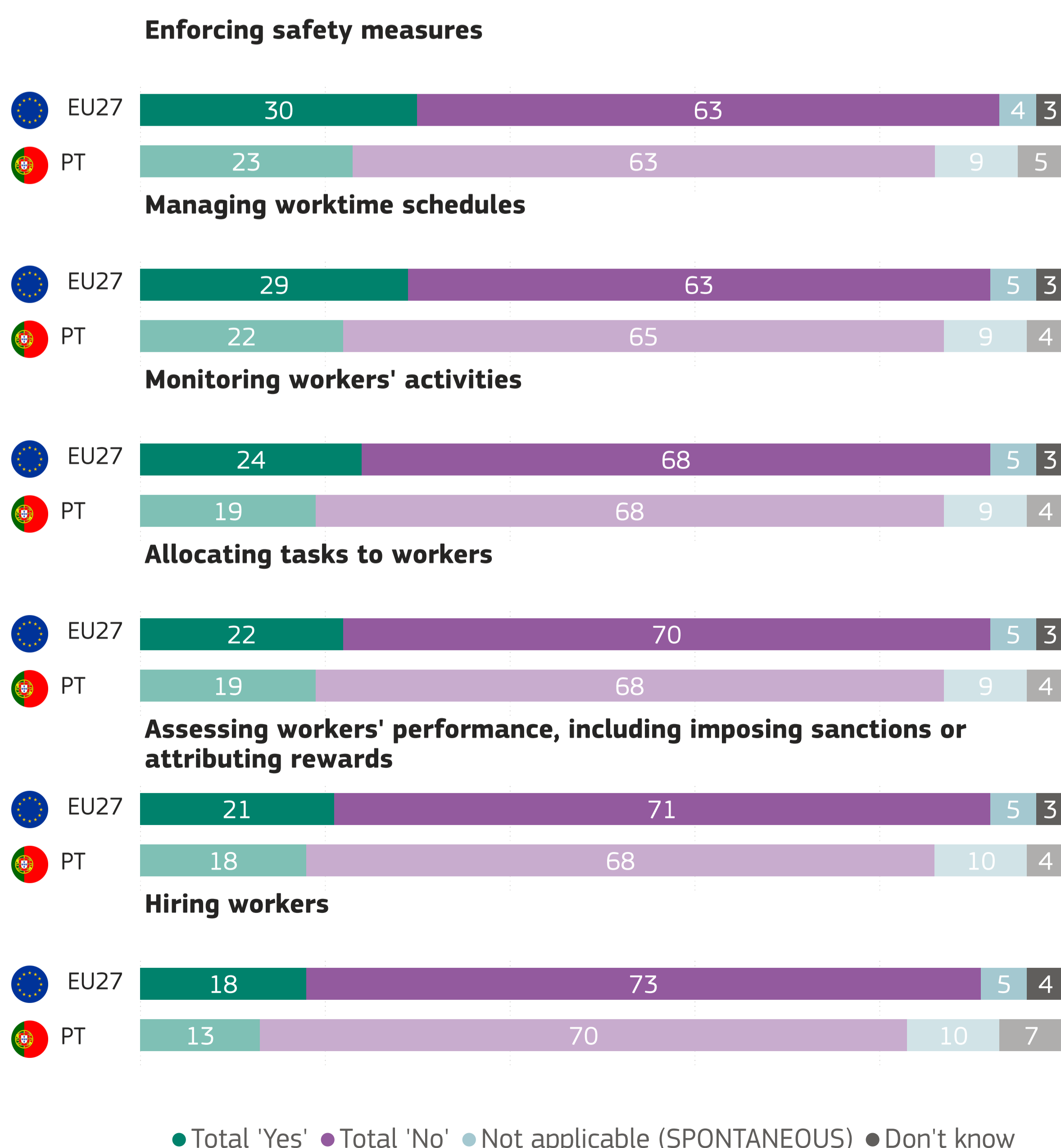
**QB4. Overall, how aware are you of the use that your employer makes of digital technologies, including artificial intelligence, to manage your or your co-workers' activities? Examples include setting working schedules, monitoring your activities, or evaluating performance. (%)**



**QB3. To what extent do you agree or disagree that your employer provides you with the necessary tools or training to work effectively with the most recent digital technologies, including Artificial Intelligence? (%)**

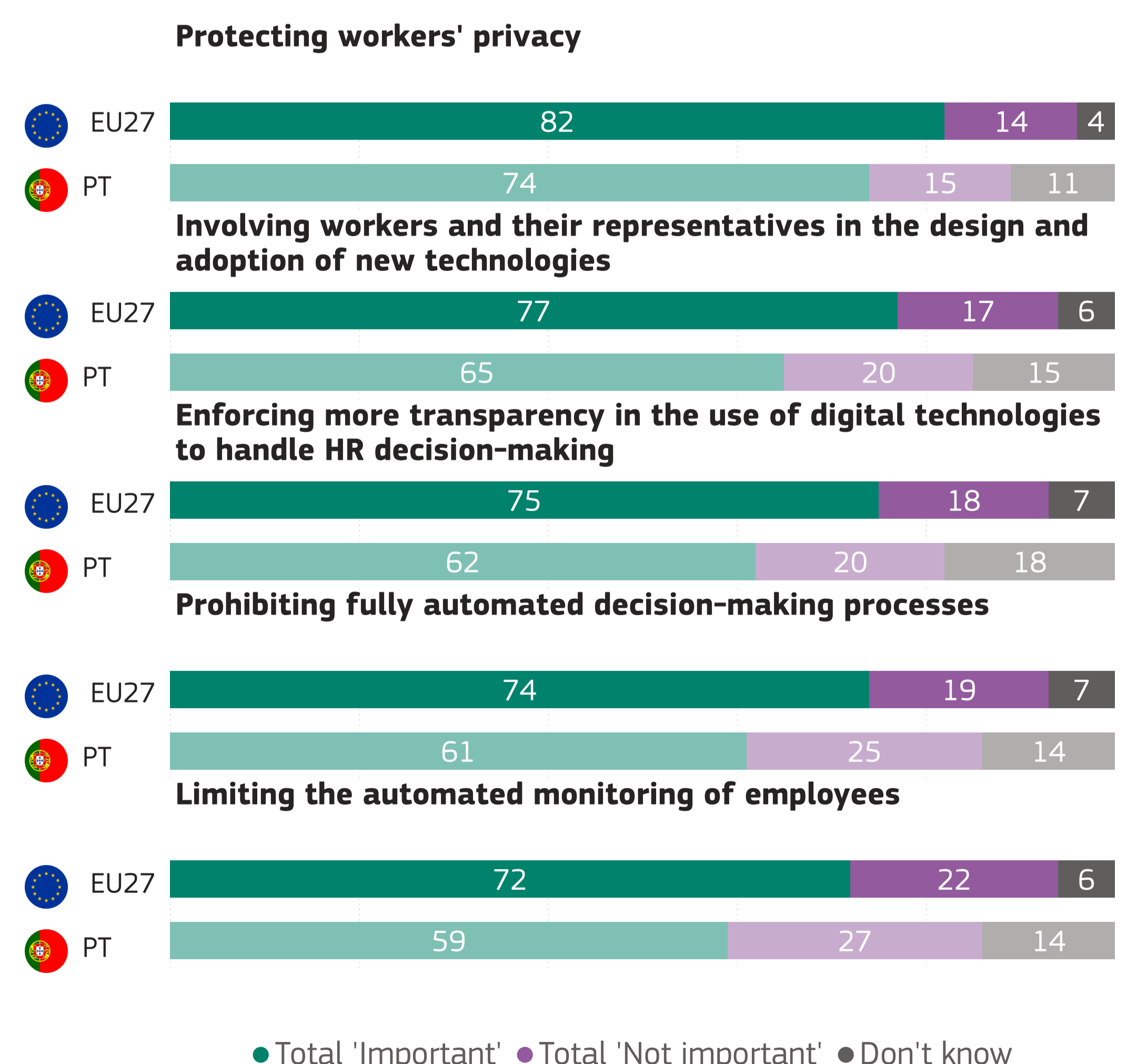


**QB7. Have the following activities ever been performed by digital technologies, including Artificial Intelligence, in your current or previous workplaces? For each activity, please refer to your most recent workplace experience. (%)**



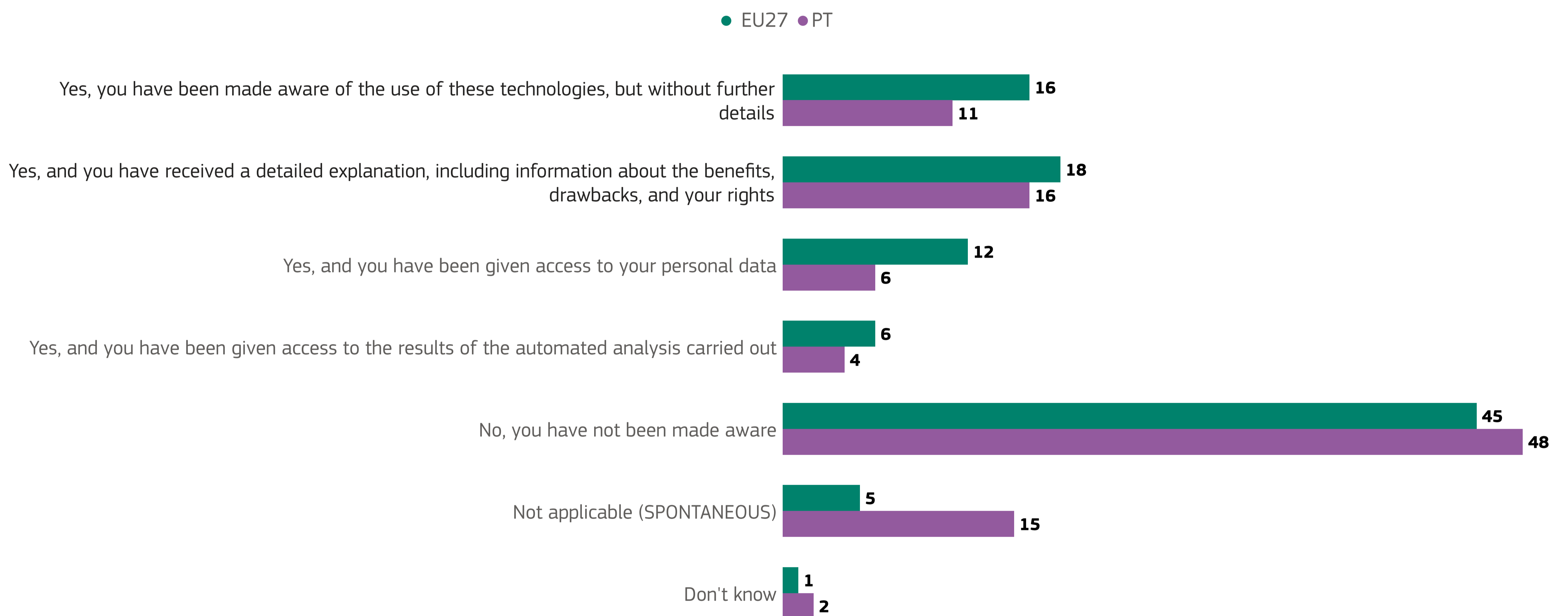
## 5. RULES AROUND DIGITAL TECHNOLOGIES IN THE WORKPLACE

**QB11. How important, if at all, do you think the following rules would be in addressing risks and maximizing the benefits of digital technologies, including Artificial Intelligence, in the workplace? (%)**



## 6. COMMUNICATION AROUND THE USE OF DIGITAL TECHNOLOGIES IN THE WORKPLACE

**QB9. Did your employer inform you about the use of digital technologies, including Artificial Intelligence, to manage activities in your workplace? (%)**



**QB10. Have you ensured that your employees or the people you manage have been informed about the use of digital technologies, including Artificial Intelligence, to manage activities in your workplace? (%)**

